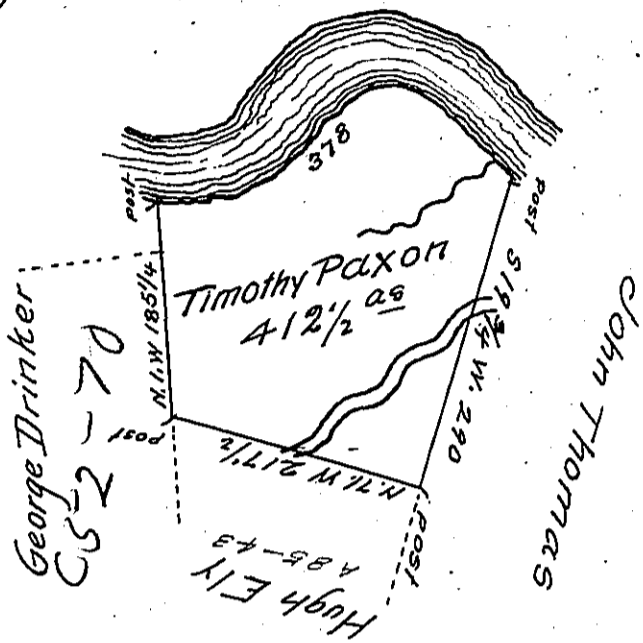


Courses & Distance
down Delaware River

S 82½ E	65
N 68 E	41
N 47½ E	98
N 55 E	21
N 68½ E	21
N 85 E	20
S 70 E	18
S 53 E	31
S 33 E	63
	<u>378</u>



In pursuance of a Warrant dated 3^d March 1794 Surveyed the
17th day of July 1794 to Timothy Paxon the above described
tract of land situate on the west side of the Delaware River about
a mile above the mouth of Equinunk Creek in Northampton County
Containing Four hundred and Twelve acres and an half and the
allowance of six p Cent

Ant^y Crothers D.S.

To Daniel Brodhead Esq^r
Surveyor General

IN TESTIMONY that the above is a copy of the original remaining on file in
the Department of Internal Affairs of Pennsylvania, made
conformably to an Act of Assembly approved the 16th day of
February, 1833, I have hereunto set my Hand and caused
the Seal of said Department to be affixed at Harrisburg,
this thirty-first day of May 1906

Loac R Brown
Secretary of Internal Affairs.